



CONNECTING SYSTEMATICALLY

Highlight: The tubular cable lug for switchgear connections, SG series

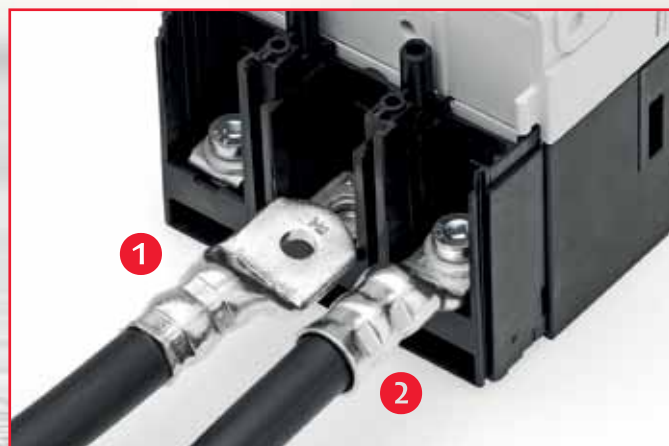
What is so special about the CIMCO SG tubular cable lug?

Increasingly frequently, the production-related, standard width of the connection flange of a cable lug is considerably wider than the channel width.

A special production process allows the flange width to be reduced while maintaining the conductive cross section, while the flange thickness increases proportionately.

This means the cable lug can easily be used for all switchgears, without compromising performance.

Another advantage is that the pipe dimensions to crimp the electrical conductors remain unchanged. This allows the user to continue to use their usual tools.



1 Normal tubular cable lug

Does not fit into the channel of the switchgear which means installation is not possible.

2 SG-tubular cable lug

Installation is possible without any problems and without loss of performance.

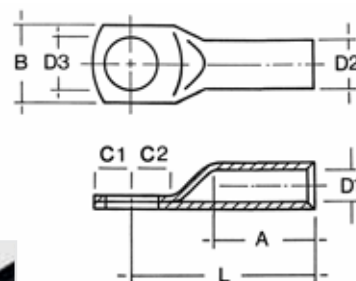




Tubular cable lugs for connecting switchgears

SG series

- Design with narrow flange, without view hole
- Material: Cu-ETP according to DIN EN 13 600, soft, F20, which means it can still be manually crimped without any problem ever with large cross sections
- Surface: galvanically tin-coated



UL approval
applied for

Article no.	Cross section	Bolts	Dimensions (mm)								PU/ pcs.
			øD1	A	B	øD3	øD2	C1	C2	L	
18 3798*	25 mm ²	6 mm	7.2	15	10	6.5	10	7	7	29.5	25
18 3800*	35 mm ²	6 mm	8.5	17	15	6.5	12	8	8	33	25
18 3801*	35 mm ²	8 mm	8.5	17	15	8.5	12	10	10	35	25
18 3802*	50 mm ²	6 mm	10	19	15	6.5	14	8	9	37	25
18 3804*	50 mm ²	8 mm	10	19	17	8.5	14	10	11	39	25
18 3806*	50 mm ²	10 mm	10	19	19	10.5	14	12	13	41	25
18 3808*	70 mm ²	6 mm	12	21	17	6.5	16.4	8	9.5	41	25
18 3810*	70 mm ²	8 mm	12	21	17	8.5	16.4	10	11.5	43	25
18 3812*	70 mm ²	10 mm	12	21	19	10.5	16.4	12	13.5	45	25
18 3814*	70 mm ²	12 mm	12	21	19	13	16.4	12	14.5	46	25
18 3815*	95 mm ²	6 mm	13.5	23	19	6.5	17.8	8	9.5	43	25
18 3816*	95 mm ²	8 mm	13.5	23	19	8.5	17.8	10	11.5	48	25
18 3818*	95 mm ²	10 mm	13.5	23	19	10.5	17.8	12	13.5	48	25
18 3820*	95 mm ²	12 mm	13.5	23	19	13	17.8	12	14.5	49	25
18 3821*	120 mm ²	6 mm	15	26	20	6.5	19.4	8	9	49	10
18 3822*	120 mm ²	8 mm	15	26	20	8.5	19.4	10	11	51	10
18 3824*	120 mm ²	10 mm	15	26	20	10.5	19.4	12	13	53	10
18 3826*	120 mm ²	12 mm	15	26	20	13	19.4	12	14	54	10
18 3827*	150 mm ²	6 mm	16.5	29	20	6.5	20.8	8	9	52	10
18 3828*	150 mm ²	8 mm	16.5	29	20	8.5	20.8	10	11	54	10
18 3830*	150 mm ²	10 mm	16.5	29	20	10.5	20.8	12	13	56	10
18 3832*	150 mm ²	12 mm	16.5	29	20	13	20.8	12	14	57	10
18 3833*	185 mm ²	8 mm	19	30	26	8.5	23.8	10	12	58	10
18 3834*	185 mm ²	10 mm	19	30	26	10.5	23.8	12	14	60	10
18 3836*	185 mm ²	12 mm	19	30	26	13	23.8	12	14	60	10
18 3838*	185 mm ²	16 mm	19	30	26	17	23.8	16	18	64	10
18 3839*	240 mm ²	8 mm	21	35	30	8.5	25.8	10	12	63	5
18 3840*	240 mm ²	10 mm	21	35	30	10.5	25.8	12	14	65	5
18 3842*	240 mm ²	12 mm	21	35	30	13	25.8	12	14	65	5
18 3844*	240 mm ²	16 mm	21	35	30	17	25.8	16	18	69	5
18 3846*	300 mm ²	10 mm	24	42	30	10.5	29.8	12	13	76	5
18 3848*	300 mm ²	12 mm	24	42	30	13	29.8	12	16	79	5
18 3850*	300 mm ²	16 mm	24	42	30	17	29.8	16	18	81	5

Tubular cable lugs Cu

Standard design

- Also available with view hole
- Suitable for finely stranded conductors according to IEC 228
- Annealed to copper hardness F 20, soft, so that even large cross sections can be crimped manually



UL approval
applied for

Article no.	Cross section	Bolt ø	PU/pcs.
18 0650*	0.75 mm ²	3 mm	100
18 0652*	0.75 mm ²	4 mm	100
18 0654*	0.75 mm ²	5 mm	100
18 0660*	1.5 mm ²	4 mm	100
18 0662*	1.5 mm ²	5 mm	100
18 0664*	1.5 mm ²	6 mm	100
18 0670*	2.5 mm ²	4 mm	100
18 0672*	2.5 mm ²	5 mm	100
18 0674*	2.5 mm ²	6 mm	100
18 0676*	2.5 mm ²	8 mm	100
18 0680*	4 mm ²	4 mm	100
18 0682*	4 mm ²	5 mm	100
18 0684*	4 mm ²	6 mm	100
18 0686*	4 mm ²	8 mm	100
18 0692*	6 mm ²	5 mm	100
18 0694*	6 mm ²	6 mm	100
18 0696*	6 mm ²	8 mm	100
18 0697*	6 mm ²	10 mm	100
18 0698*	6 mm ²	12 mm	100
18 0700*	10 mm ²	5 mm	100
18 0702*	10 mm ²	6 mm	100
18 0704*	10 mm ²	8 mm	100
18 0705*	10 mm ²	10 mm	100
18 0706*	10 mm ²	12 mm	100
18 0709*	16 mm ²	5 mm	100
18 0710*	16 mm ²	6 mm	100
18 0712*	16 mm ²	8 mm	100
18 0714*	16 mm ²	10 mm	100
18 0715*	16 mm ²	12 mm	100
18 0718*	25 mm ²	5 mm	50
18 0720*	25 mm ²	6 mm	50
18 0722*	25 mm ²	8 mm	50
18 0724*	25 mm ²	10 mm	50
18 0725*	25 mm ²	12 mm	50
18 0726*	25 mm ²	14 mm	50
18 0730*	35 mm ²	6 mm	50
18 0732*	35 mm ²	8 mm	50
18 0734*	35 mm ²	10 mm	50
18 0735*	35 mm ²	12 mm	50
18 0736*	35 mm ²	14 mm	50
18 0737*	35 mm ²	16 mm	50
18 0739*	50 mm ²	6 mm	50
18 0740*	50 mm ²	8 mm	50
18 0742*	50 mm ²	10 mm	50
18 0744*	50 mm ²	12 mm	50
18 0745*	50 mm ²	14 mm	50

Article no.	Cross section	Bolt ø	PU/pcs.
18 0746*	50 mm ²	16 mm	50
18 0747*	50 mm ²	20 mm	50
18 0749*	70 mm ²	6 mm	50
18 0750*	70 mm ²	8 mm	25
18 0752*	70 mm ²	10 mm	25
18 0754*	70 mm ²	12 mm	25
18 0755*	70 mm ²	14 mm	25
18 0756*	70 mm ²	16 mm	25
18 0758*	70 mm ²	20 mm	25
18 0759*	95 mm ²	8 mm	25
18 0760*	95 mm ²	10 mm	25
18 0762*	95 mm ²	12 mm	25
18 0763*	95 mm ²	14 mm	25
18 0764*	95 mm ²	16 mm	25
18 0766*	95 mm ²	20 mm	25
18 0768*	120 mm ²	8 mm	20
18 0770*	120 mm ²	10 mm	20
18 0772*	120 mm ²	12 mm	20
18 0773*	120 mm ²	14 mm	20
18 0774*	120 mm ²	16 mm	20
18 0776*	120 mm ²	20 mm	20
18 0778*	150 mm ²	8 mm	20
18 0780*	150 mm ²	10 mm	20
18 0782*	150 mm ²	12 mm	20
18 0783*	150 mm ²	14 mm	20
18 0784*	150 mm ²	16 mm	20
18 0786*	150 mm ²	20 mm	20
18 0788*	185 mm ²	10 mm	10
18 0790*	185 mm ²	12 mm	10
18 0791*	185 mm ²	14 mm	10
18 0792*	185 mm ²	16 mm	10
18 0794*	185 mm ²	20 mm	10
18 0798*	240 mm ²	10 mm	10
18 0800*	240 mm ²	12 mm	10
18 0801*	240 mm ²	14 mm	10
18 0802*	240 mm ²	16 mm	10
18 0804*	240 mm ²	20 mm	10
18 0818*	300 mm ²	12 mm	5
18 0819*	300 mm ²	14 mm	5
18 0820*	300 mm ²	16 mm	5
18 0822*	300 mm ²	20 mm	5
18 0826*	400 mm ²	12 mm	5
18 0828*	400 mm ²	14 mm	5
18 0830*	400 mm ²	16 mm	5
18 0832*	400 mm ²	20 mm	5

Angled tubular cable lugs Cu

standard design with 90° and 45° angle

- Material: ETP Cu according to DIN EN 13600
- Suitable for finely stranded conductors according to IEC 228
- Annealed to copper hardness F 20, soft, so that even large cross sections can be crimped manually



UL approval
applied for

90° angle

Article no.	Cross section	Bolt ø	PU/pcs.
18 3160*	6 mm ²	5 mm	100
18 3161*	6 mm ²	6 mm	100
18 3162*	6 mm ²	8 mm	100
18 3163*	6 mm ²	10 mm	100
18 3164*	6 mm ²	12 mm	100
18 3165*	10 mm ²	5 mm	100
18 3166*	10 mm ²	6 mm	100
18 3167*	10 mm ²	8 mm	100
18 3168*	10 mm ²	10 mm	100
18 3169*	10 mm ²	12 mm	100
18 3170*	16 mm ²	5 mm	100
18 3171*	16 mm ²	6 mm	100
18 3172*	16 mm ²	8 mm	100
18 3173*	16 mm ²	10 mm	100
18 3174*	16 mm ²	12 mm	100
18 3175*	25 mm ²	5 mm	100
18 3134*	25 mm ²	6 mm	100
18 3135*	25 mm ²	8 mm	100
18 3176*	25 mm ²	10 mm	100
18 3177*	25 mm ²	12 mm	100
18 3156*	35 mm ²	6 mm	100
18 3130*	35 mm ²	8 mm	100
18 3136*	35 mm ²	10 mm	100
18 3157*	35 mm ²	12 mm	100
18 3158*	50 mm ²	6 mm	100
18 3131*	50 mm ²	8 mm	100
18 3137*	50 mm ²	10 mm	100
18 3159*	50 mm ²	12 mm	100
18 3132*	70 mm ²	8 mm	100
18 3133*	70 mm ²	10 mm	100
18 3140*	70 mm ²	12 mm	100
18 3141*	70 mm ²	16 mm	100
18 3138*	95 mm ²	8 mm	50
18 3139*	95 mm ²	10 mm	50
18 3142*	95 mm ²	12 mm	50
18 3143*	95 mm ²	16 mm	50
18 3144*	120 mm ²	8 mm	50
18 3145*	120 mm ²	10 mm	50
18 3146*	120 mm ²	12 mm	50
18 3147*	120 mm ²	16 mm	50
18 3148*	150 mm ²	10 mm	50
18 3149*	150 mm ²	12 mm	50
18 3150*	185 mm ²	12 mm	50
18 3152*	185 mm ²	20 mm	50
18 3153*	240 mm ²	10 mm	20
18 3154*	240 mm ²	12 mm	20
18 3155*	240 mm ²	20 mm	20

45° angle

Article no.	Cross section	Bolt ø	PU/pcs.
18 3060*	6 mm ²	5 mm	100
18 3061*	6 mm ²	6 mm	100
18 3062*	6 mm ²	8 mm	100
18 3063*	6 mm ²	10 mm	100
18 3064*	6 mm ²	12 mm	100
18 3065*	10 mm ²	5 mm	100
18 3066*	10 mm ²	6 mm	100
18 3067*	10 mm ²	8 mm	100
18 3068*	10 mm ²	10 mm	100
18 3069*	10 mm ²	12 mm	100
18 3070*	16 mm ²	5 mm	100
18 3071*	16 mm ²	6 mm	100
18 3072*	16 mm ²	8 mm	100
18 3073*	16 mm ²	10 mm	100
18 3074*	16 mm ²	12 mm	100
18 3075*	25 mm ²	5 mm	100
18 3034*	25 mm ²	6 mm	100
18 3035*	25 mm ²	8 mm	100
18 3052*	25 mm ²	10 mm	100
18 3053*	25 mm ²	12 mm	100
18 3056*	35 mm ²	6 mm	100
18 3030*	35 mm ²	8 mm	100
18 3036*	35 mm ²	10 mm	100
18 3057*	35 mm ²	12 mm	100
18 3058*	50 mm ²	6 mm	100
18 3031*	50 mm ²	8 mm	100
18 3037*	50 mm ²	10 mm	100
18 3059*	50 mm ²	12 mm	100
18 3032*	70 mm ²	8 mm	100
18 3033*	70 mm ²	10 mm	100
18 3040*	70 mm ²	12 mm	100
18 3041*	70 mm ²	16 mm	100
18 3038*	95 mm ²	8 mm	50
18 3039*	95 mm ²	10 mm	50
18 3042*	95 mm ²	12 mm	50
18 3043*	95 mm ²	16 mm	50
18 3044*	120 mm ²	8 mm	50
18 3045*	120 mm ²	10 mm	50
18 3046*	120 mm ²	12 mm	50
18 3047*	120 mm ²	16 mm	50
18 3048*	150 mm ²	10 mm	50
18 3050*	185 mm ²	12 mm	50
18 3051*	185 mm ²	16 mm	50

Tubular cable lug Cu

designed for finely stranded conductors, F-series

- According to DIN 0295 and IEC 228
- "Easy Entry" flared cable entry
- Annealed to copper hardness F 20, soft, so that even large cross sections can be crimped manually



UL approval
applied for

Article no.	Cross section	Bolt ø	PU/pcs.
18 3255*	10 mm ²	5 mm	100
18 3256*	10 mm ²	6 mm	100
18 3258*	10 mm ²	8 mm	100
18 3260*	10 mm ²	10 mm	100
18 3262*	10 mm ²	12 mm	100
18 3265*	16 mm ²	5 mm	50
18 3266*	16 mm ²	6 mm	50
18 3268*	16 mm ²	8 mm	50
18 3270*	16 mm ²	10 mm	50
18 3272*	16 mm ²	12 mm	50
18 3275*	25 mm ²	5 mm	50
18 3276*	25 mm ²	6 mm	50
18 3278*	25 mm ²	8 mm	50
18 3280*	25 mm ²	10 mm	50
18 3282*	25 mm ²	12 mm	50
18 3286*	35 mm ²	6 mm	50
18 3288*	35 mm ²	8 mm	50
18 3290*	35 mm ²	10 mm	50
18 3292*	35 mm ²	12 mm	50
18 3294*	35 mm ²	14 mm	50
18 3296*	50 mm ²	6 mm	50
18 3298*	50 mm ²	8 mm	50
18 3300*	50 mm ²	10 mm	50
18 3302*	50 mm ²	12 mm	50
18 3304*	50 mm ²	14 mm	50
18 3306*	70 mm ²	6 mm	25
18 3308*	70 mm ²	8 mm	25
18 3310*	70 mm ²	10 mm	25
18 3312*	70 mm ²	12 mm	25
18 3314*	70 mm ²	14 mm	25

Article no.	Cross section	Bolt ø	PU/pcs.
18 3316*	70 mm ²	16 mm	25
18 3318*	95 mm ²	8 mm	25
18 3320*	95 mm ²	10 mm	25
18 3322*	95 mm ²	12 mm	25
18 3324*	95 mm ²	14 mm	25
18 3326*	95 mm ²	16 mm	25
18 3328*	120 mm ²	8 mm	10
18 3330*	120 mm ²	10 mm	10
18 3332*	120 mm ²	12 mm	10
18 3334*	120 mm ²	14 mm	10
18 3336*	120 mm ²	16 mm	10
18 3338*	150 mm ²	8 mm	10
18 3340*	150 mm ²	10 mm	10
18 3342*	150 mm ²	12 mm	10
18 3344*	150 mm ²	14 mm	10
18 3346*	150 mm ²	16 mm	10
18 3348*	150 mm ²	20 mm	10
18 3350*	185 mm ²	10 mm	10
18 3352*	185 mm ²	12 mm	10
18 3354*	185 mm ²	14 mm	10
18 3356*	185 mm ²	16 mm	10
18 3360*	185 mm ²	20 mm	10
18 3362*	240 mm ²	12 mm	10
18 3364*	240 mm ²	14 mm	10
18 3366*	240 mm ²	16 mm	10
18 3370*	240 mm ²	20 mm	10
18 3372*	300 mm ²	12 mm	10
18 3374*	300 mm ²	14 mm	10
18 3376*	300 mm ²	16 mm	10
18 3380*	300 mm ²	20 mm	10

Butt connectors Cu standard design

- Material: ETP Cu according to DIN EN 13600
- Suitable for finely stranded conductors according to IEC 228
- Annealed to copper hardness F 20, soft, so that even large cross sections can be crimped manually



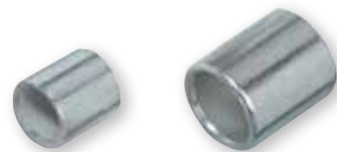
UL approval
applied for

Article no.	Cross section	Length	PU/pcs.
18 0900*	0.75 mm ²	15.7 mm	100
18 0902*	1.5 mm ²	14.5 mm	100
18 0904*	2.5 mm ²	14.5 mm	100
18 0906*	4 mm ²	19.0 mm	100
18 0908*	6 mm ²	24.0 mm	100
18 0910*	10 mm ²	28.0 mm	100
18 0912*	16 mm ²	34.0 mm	100
18 0914*	25 mm ²	38.0 mm	100
18 0916*	35 mm ²	42.0 mm	50

Article no.	Cross section	Length	PU/pcs.
18 0918*	50 mm ²	48.0 mm	50
18 0920*	70 mm ²	52.0 mm	50
18 0922*	95 mm ²	59.0 mm	50
18 0924*	120 mm ²	62.0 mm	50
18 0926*	150 mm ²	72.0 mm	50
18 0928*	185 mm ²	72.0 mm	25
18 0930*	240 mm ²	82.0 mm	25
18 0932*	300 mm ²	102.0 mm	25
18 0934*	400 mm ²	102.0 mm	10

Parallel connectors Cu standard design

- Material: ETP Cu according to DIN EN 13600
- Suitable for finely stranded conductors according to IEC 228
- Annealed to copper hardness F 20, soft, so that even large cross sections can be crimped manually



UL approval
applied for

Article no.	Cross section	Length	PU/pcs.
18 3180*	1.5 mm ²	7 mm	100
18 3182*	2.5 mm ²	7 mm	100
18 3184*	4-6 mm ²	7 mm	100
18 3186*	10 mm ²	9 mm	100
18 3188*	16 mm ²	10 mm	100
18 3190*	25 mm ²	11 mm	50
18 3192*	35 mm ²	12 mm	50

Article no.	Cross section	Length	PU/pcs.
18 3194*	50 mm ²	16 mm	50
18 3196*	70 mm ²	19 mm	50
18 3198*	95 mm ²	20 mm	25
18 3200*	120 mm ²	20 mm	25
18 3202*	150 mm ²	20 mm	25
18 3204*	185 mm ²	28 mm	10
18 3206*	240 mm ²	31 mm	10

Sleeves for compressed or tapered conductors

- standard design
- Material: ETP Cu according to DIN EN 13600
- Suitable for compressed, multi-stranded or tapered, finely stranded conductors for diameter equalisation (only narrow hexagonal crimping!)



Article no.	Cross section	Length	PU/pcs.
18 3400*	16 mm ²	11 mm	100
18 3401*	25 mm ²	14 mm	100
18 3402*	35 mm ²	15 mm	100
18 3403*	50 mm ²	18 mm	50
18 3404*	70 mm ²	19 mm	50
18 3405*	95 mm ²	21 mm	50
18 3406*	120 mm ²	22 mm	50
18 3407*	150 mm ²	26 mm	25
18 3408*	185 mm ²	26 mm	25
18 3409*	240 mm ²	30 mm	25
18 3410*	300 mm ²	38 mm	10
18 3411*	400 mm ²	38 mm	10

Set of sleeves for compressed conductors

- In premium-quality raaco set box
- Contents:
 - 285 assorted pieces
 - 50 pcs. each 50 mm²
 - 50 pcs. each 70 mm²
 - 50 pcs. each 95 mm²
 - 50 pcs. each 120 mm²
 - 25 pcs. each 150 mm²
 - 25 pcs. each 185 mm²
 - 25 pcs. each 240 mm²
 - 10 pcs. each 300 mm²



Article no.
18 3415

EXPERT TIP

Sleeves for compressed conductors for tubular cable lugs standard design

A simple and practical solution, with sleeves made from high-quality electrolytic copper that optimally fit the cable dimensions. The special ferrules act as filling material between the conductor and the connection element, ensuring a perfect and permanent connection.



ek (RE)



tk (RM)



tkt (RM)



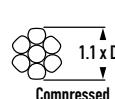
ec (SE)



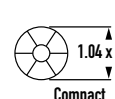
tc (SM)



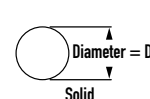
Concentric Round



Compressed



Compact



Solid

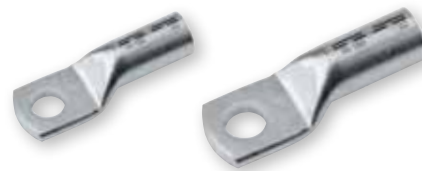
Structures (from left to right)

- ek (RE) = round single-stranded, solid conductor;
- tk (RM) = round multi-stranded, non-compressed;
- tkt (RM) = round multi-stranded, compressed;
- ec (SE) = sector-shaped single-stranded, solid conductor;
- tc (SM) = sector-shaped multi-stranded

The dimensional relations of the individual conductor types compared to a solid conductor (far right). It becomes evident from the graphic that a multi-stranded conductor is larger by a factor of between 1.13 (non-compressed) and 1.04 (theoretical maximum compression) than a solid conductor of the same cross section. However, a medium compressed conductor results in a factor of 1.1.

Compression cable lugs Cu DIN 46235

- Material: ETP Cu according to DIN EN 13600
- Especially suitable for finely stranded conductors according to IEC 228
- Annealed to copper hardness F 20, soft, so that even large cross sections can be crimped manually



UL approval
applied for

Article no.	Cross section	Bolt ø	PU/pcs.
18 3500*	6 mm ²	5 mm	100
18 3501*	6 mm ²	6 mm	100
18 3570*	6 mm ²	8 mm	100
18 3502*	10 mm ²	5 mm	100
18 3503*	10 mm ²	6 mm	100
18 3504*	10 mm ²	8 mm	100
18 3505*	16 mm ²	6 mm	100
18 3506*	16 mm ²	8 mm	100
18 3507*	16 mm ²	10 mm	100
18 3508*	16 mm ²	12 mm	100
18 3509*	25 mm ²	6 mm	50
18 3510*	25 mm ²	8 mm	50
18 3511*	25 mm ²	10 mm	50
18 3512*	25 mm ²	12 mm	25
18 3572*	35 mm ²	6 mm	100
18 3513*	35 mm ²	8 mm	50
18 3514*	35 mm ²	10 mm	50
18 3515*	35 mm ²	12 mm	50
18 3516*	35 mm ²	14 mm	50
18 3517*	50 mm ²	8 mm	50
18 3518*	50 mm ²	10 mm	50
18 3519*	50 mm ²	12 mm	50
18 3520*	50 mm ²	14 mm	25
18 3521*	50 mm ²	16 mm	25
18 3522*	70 mm ²	8 mm	25
18 3523*	70 mm ²	10 mm	25
18 3524*	70 mm ²	12 mm	25
18 3525*	70 mm ²	14 mm	25
18 3526*	70 mm ²	16 mm	25
18 3574*	95 mm ²	8 mm	25
18 3527*	95 mm ²	10 mm	25
18 3528*	95 mm ²	12 mm	25

Article no.	Cross section	Bolt ø	PU/pcs.
18 3529*	95 mm ²	14 mm	25
18 3530*	95 mm ²	16 mm	25
18 3531*	120 mm ²	10 mm	25
18 3532*	120 mm ²	12 mm	25
18 3533*	120 mm ²	14 mm	25
18 3534*	120 mm ²	16 mm	25
18 3535*	120 mm ²	20 mm	25
18 3536*	150 mm ²	10 mm	10
18 3537*	150 mm ²	12 mm	10
18 3538*	150 mm ²	14 mm	10
18 3539*	150 mm ²	16 mm	10
18 3540*	150 mm ²	20 mm	10
18 3541*	185 mm ²	10 mm	10
18 3542*	185 mm ²	12 mm	10
18 3543*	185 mm ²	14 mm	10
18 3544*	185 mm ²	16 mm	10
18 3545*	185 mm ²	20 mm	10
18 3546*	240 mm ²	12 mm	5
18 3547*	240 mm ²	14 mm	5
18 3548*	240 mm ²	16 mm	5
18 3549*	240 mm ²	20 mm	5
18 3550*	300 mm ²	14 mm	5
18 3551*	300 mm ²	16 mm	5
18 3552*	300 mm ²	20 mm	5
18 3553*	400 mm ²	14 mm	5
18 3554*	400 mm ²	16 mm	5
18 3555*	400 mm ²	20 mm	5
18 3556*	500 mm ²	16 mm	5
18 3557*	500 mm ²	20 mm	5
18 3558*	625 mm ²	16 mm	5
18 3559*	625 mm ²	20 mm	5

Compression connectors Cu DIN 46267, part 1

- Material: ETP Cu according to DIN EN 13600
- Especially suitable for finely stranded conductors according to IEC 228
- Annealed to copper hardness F 20, soft, so that even large cross sections can be crimped manually



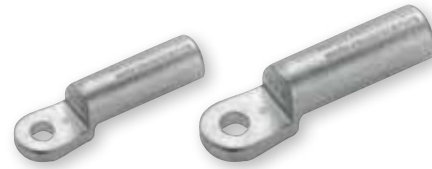
UL approval
applied for

Article no.	Cross section	PU/pcs.
18 3700*	6 mm ²	100
18 3701*	10 mm ²	100
18 3702*	16 mm ²	100
18 3703*	25 mm ²	50
18 3704*	35 mm ²	50
18 3705*	50 mm ²	50
18 3706*	70 mm ²	50
18 3707*	95 mm ²	25

Article no.	Cross section	PU/pcs.
18 3708*	120 mm ²	25
18 3709*	150 mm ²	10
18 3710*	185 mm ²	10
18 3711*	240 mm ²	10
18 3712*	300 mm ²	5
18 3713*	400 mm ²	5
18 3714*	500 mm ²	1
18 3715*	625 mm ²	1

AL compression cable lugs DIN 46329

- Made of E-Al, grease-filled
- Barrier seal design with oil stop



Article no.	Cross section		Bolt Ø	PU/ pcs.
	rm/sm	se		
18 3617	50 mm ²	70 mm ²	8.5 mm	4
18 3618	50 mm ²	70 mm ²	10.5 mm	4
18 3619	50 mm ²	70 mm ²	13 mm	4
18 3622	70 mm ²	95 mm ²	8.5 mm	4
18 3623	70 mm ²	95 mm ²	10.5 mm	4
18 3624	70 mm ²	95 mm ²	13 mm	4
18 3627	95 mm ²	120 mm ²	10.5 mm	4
18 3628	95 mm ²	120 mm ²	13 mm	4
18 3630	95 mm ²	120 mm ²	17 mm	4
18 3631	120 mm ²	150 mm ²	10.5 mm	4
18 3632	120 mm ²	150 mm ²	13 mm	4
18 3634	120 mm ²	150 mm ²	17 mm	4
18 3636	150 mm ²	185 mm ²	10.5 mm	4
18 3637	150 mm ²	185 mm ²	13 mm	4
18 3639	150 mm ²	185 mm ²	17 mm	4
18 3640	150 mm ²	185 mm ²	21 mm	4
18 3641	185 mm ²	240 mm ²	10.5 mm	4

Article no.	Cross section		Bolt Ø	PU/ pcs.
	rm/sm	se		
18 3642	185 mm ²	240 mm ²	13 mm	4
18 3644	185 mm ²	240 mm ²	17 mm	4
18 3645	185 mm ²	240 mm ²	21 mm	4
18 3646	240 mm ²	300 mm ²	10.5 mm	4
18 3647	240 mm ²	300 mm ²	13 mm	4
18 3648	240 mm ²	300 mm ²	17 mm	4
18 3649	240 mm ²	300 mm ²	21 mm	4
18 3650	300 mm ²	-	13 mm	1
18 3651	300 mm ²	-	17 mm	1
18 3652	300 mm ²	-	21 mm	1
18 3653	400 mm ²	-	13 mm	1
18 3654	400 mm ²	-	17 mm	1
18 3655	400 mm ²	-	21 mm	1
18 3656	500 mm ²	-	13 mm	1
18 3657	500 mm ²	-	17 mm	1
18 3658	500 mm ²	-	21 mm	1

AL compression connector DIN 46267, part 2

- Made of E-Al, grease-filled
- For pre-rounded sm/se sector-shaped conductors



Article no.	Cross section		PU/ pcs.
	rm/sm	se	
18 3860	35 mm ²	50 mm ²	10
18 3861	50 mm ²	70 mm ²	10
18 3862	70 mm ²	95 mm ²	10
18 3863	95 mm ²	120 mm ²	10
18 3864	95 mm ²	150 mm ²	10

Article no.	Cross section		PU/ pcs.
	rm/sm	se	
18 3865	150 mm ²	185 mm ²	10
18 3866	185 mm ²	240 mm ²	5
18 3867	240 mm ²	300 mm ²	5
18 3868	300 mm ²	-	1
18 3869	400 mm ²	-	1

AL-CU compression cable lugs DIN 46329

- Made of E-Al and E-Cu, grease-filled
- For pre-rounded sm/se sector-shaped conductors



Article no.	Cross section		Bolt Ø	PU/ pcs.
	rm/sm	se		
18 3910	25 mm ²	35 mm ²	8.5 mm	10
18 3911	25 mm ²	35 mm ²	10.5 mm	10
18 3912	25 mm ²	35 mm ²	13 mm	10
18 3914	35 mm ²	50 mm ²	10.5 mm	10
18 3915	35 mm ²	50 mm ²	13 mm	10
18 3918	50 mm ²	70 mm ²	10.5 mm	10
18 3919	50 mm ²	70 mm ²	13 mm	10
18 3923	70 mm ²	95 mm ²	10.5 mm	10
18 3924	70 mm ²	95 mm ²	13 mm	10
18 3928	95 mm ²	120 mm ²	13 mm	10
18 3930	95 mm ²	120 mm ²	17 mm	10

Article no.	Cross section		Bolt Ø	PU/ pcs.
	rm/sm	se		
18 3932	120 mm ²	150 mm ²	13 mm	10
18 3934	120 mm ²	150 mm ²	17 mm	10
18 3937	150 mm ²	185 mm ²	13 mm	5
18 3939	150 mm ²	185 mm ²	17 mm	5
18 3942	185 mm ²	240 mm ²	13 mm	5
18 3944	185 mm ²	240 mm ²	17 mm	5
18 3946	240 mm ²	300 mm ²	13 mm	5
18 3948	240 mm ²	300 mm ²	17 mm	5
18 3951	300 mm ²	-	17 mm	1
18 3952	300 mm ²	-	21 mm	1

AL-CU compression connectors DIN 46267, part 2

- Made of E-Al and of E-Cu in accordance with EN 13600, bare
- For connections of CU cables according to DIN 48201, ALU cables according to DIN 48201, part 1 and ALU cables DIN EN 50182



Article no.	Cross section			PU/ pcs.
	AL rm/sm	AL se	CU	
18 3420	70 mm ²	95 mm ²	16 mm ²	20
18 3421	70 mm ²	95 mm ²	25 mm ²	20
18 3422	70 mm ²	95 mm ²	35 mm ²	20
18 3423	70 mm ²	95 mm ²	50 mm ²	20
18 3424	70 mm ²	95 mm ²	70 mm ²	20
18 3425	70 mm ²	95 mm ²	95 mm ²	20
18 3426	70 mm ²	95 mm ²	120 mm ²	20
18 3430	95 mm ²	120 mm ²	16 mm ²	20
18 3431	95 mm ²	120 mm ²	25 mm ²	20
18 3432	95 mm ²	120 mm ²	35 mm ²	20
18 3433	95 mm ²	120 mm ²	50 mm ²	20
18 3434	95 mm ²	120 mm ²	70 mm ²	20
18 3435	95 mm ²	120 mm ²	95 mm ²	20
18 3436	95 mm ²	120 mm ²	120 mm ²	20
18 3440	120 mm ²	150 mm ²	35 mm ²	20
18 3441	120 mm ²	150 mm ²	50 mm ²	20
18 3442	120 mm ²	150 mm ²	70 mm ²	20
18 3443	120 mm ²	150 mm ²	95 mm ²	20
18 3444	120 mm ²	150 mm ²	120 mm ²	20
18 3450	150 mm ²	185 mm ²	16 mm ²	20
18 3451	150 mm ²	185 mm ²	25 mm ²	20
18 3452	150 mm ²	185 mm ²	35 mm ²	20
18 3453	150 mm ²	185 mm ²	50 mm ²	20

Article no.	Cross section			PU/ pcs.
	AL rm/sm	AL se	CU	
18 3454	150 mm ²	185 mm ²	70 mm ²	20
18 3455	150 mm ²	185 mm ²	95 mm ²	20
18 3456	150 mm ²	185 mm ²	120 mm ²	20
18 3457	150 mm ²	185 mm ²	150 mm ²	20
18 3460	185 mm ²	240 mm ²	50 mm ²	20
18 3461	185 mm ²	240 mm ²	70 mm ²	20
18 3462	185 mm ²	240 mm ²	95 mm ²	20
18 3463	185 mm ²	240 mm ²	120 mm ²	20
18 3464	185 mm ²	240 mm ²	150 mm ²	20
18 3465	185 mm ²	240 mm ²	185 mm ²	20
18 3470	240 mm ²	300 mm ²	50 mm ²	20
18 3471	240 mm ²	300 mm ²	70 mm ²	20
18 3472	240 mm ²	300 mm ²	95 mm ²	20
18 3473	240 mm ²	300 mm ²	120 mm ²	20
18 3474	240 mm ²	300 mm ²	150 mm ²	20
18 3475	240 mm ²	300 mm ²	185 mm ²	20
18 3476	240 mm ²	300 mm ²	240 mm ²	20
18 3480	300 mm ²	300 mm ²	120 mm ²	20
18 3481	300 mm ²	300 mm ²	150 mm ²	20
18 3482	300 mm ²	300 mm ²	185 mm ²	20
18 3483	300 mm ²	300 mm ²	240 mm ²	20
18 3484	300 mm ²	300 mm ²	300 mm ²	20

Crimping cable lugs Cu ring-shaped, DIN 46234

- Material: ETP Cu according to DIN EN 13600
- Especially suitable for finely stranded conductors according to IEC 228



Article no.	Cross section	Bolt ø	PU/pcs.
18 0400	0.5 - 1 mm ²	3 mm	100
18 0402	0.5 - 1 mm ²	4 mm	100
18 0403	0.5 - 1 mm ²	5 mm	100
18 0407	1.5 - 2.5 mm ²	3 mm	100
18 0408	1.5 - 2.5 mm ²	4 mm	100
18 0410	1.5 - 2.5 mm ²	5 mm	100
18 0412	1.5 - 2.5 mm ²	6 mm	100
18 0413	1.5 - 2.5 mm ²	8 mm	100
18 0416	4 - 6 mm ²	4 mm	100
18 0418	4 - 6 mm ²	5 mm	100
18 0420	4 - 6 mm ²	6 mm	100
18 0422	4 - 6 mm ²	8 mm	100
18 0423	4 - 6 mm ²	10 mm	100
18 0426	10 mm ²	5 mm	100
18 0428	10 mm ²	6 mm	100
18 0430	10 mm ²	8 mm	100
18 0432	10 mm ²	10 mm	100
18 0434	10 mm ²	12 mm	100
18 0436	16 mm ²	5 mm	100
18 0438	16 mm ²	6 mm	100
18 0440	16 mm ²	8 mm	100
18 0442	16 mm ²	10 mm	100
18 0444	16 mm ²	12 mm	100
18 0446	25 mm ²	5 mm	100
18 0448	25 mm ²	6 mm	100
18 0450	25 mm ²	8 mm	100
18 0452	25 mm ²	10 mm	100
18 0454	25 mm ²	12 mm	100
18 0456	25 mm ²	16 mm	100
18 0458	35 mm ²	6 mm	100

Article no.	Cross section	Bolt ø	PU/pcs.
18 0460	35 mm ²	8 mm	100
18 0462	35 mm ²	10 mm	100
18 0464	35 mm ²	12 mm	100
18 0466	35 mm ²	16 mm	100
18 0468	50 mm ²	6 mm	100
18 0470	50 mm ²	8 mm	100
18 0472	50 mm ²	10 mm	100
18 0474	50 mm ²	12 mm	100
18 0476	50 mm ²	16 mm	100
18 0478	70 mm ²	6 mm	100
18 0480	70 mm ²	8 mm	100
18 0482	70 mm ²	10 mm	100
18 0484	70 mm ²	12 mm	100
18 0486	70 mm ²	16 mm	100
18 0488	95 mm ²	8 mm	100
18 0490	95 mm ²	10 mm	100
18 0492	95 mm ²	12 mm	100
18 0494	95 mm ²	16 mm	100
18 0496	120 mm ²	8 mm	100
18 0498	120 mm ²	10 mm	100
18 0500	120 mm ²	12 mm	100
18 0502	120 mm ²	16 mm	100
18 0504	150 mm ²	10 mm	100
18 0506	150 mm ²	12 mm	100
18 0508	150 mm ²	16 mm	100
18 0510	185 mm ²	12 mm	100
18 0512	185 mm ²	16 mm	100
18 0514	240 mm ²	12 mm	100
18 0516	240 mm ²	16 mm	100

Crimping cable lugs pin-shaped Cu, DIN 46230

- Material: ETP Cu according to DIN EN 13600
- Hard soldered ferrule seam
- For connections with strain relief



The articles marked with an *

Article no.	Cross section	Pin ø	PU/pcs.
18 0590*	0.5 - 1 mm ²	1.8 mm	100
18 0592*	1.5 - 2.5 mm ²	2.3 mm	100
18 0594*	4 - 6 mm ²	3.4 mm	100
18 0600*	10 mm ²	4.5 mm	100
18 0602*	16 mm ²	6 mm	100

Article no.	Cross section	Pin ø	PU/pcs.
18 0604	25 mm ²	7 mm	50
18 0606*	35 mm ²	8 mm	50
18 0608*	50 mm ²	9.5 mm	50
18 0610	70 mm ²	11 mm	50
18 0612	95 mm ²	12.5 mm	50

Crimping cable lugs fork-shaped Cu

- Material: ETP Cu according to DIN EN 13600
- Hard soldered ferrule seam
- For connections with strain relief



The articles marked with an *

Article no.	Cross section	Bolt ø	PU/pcs.
18 0520	0.5 - 1 mm ²	3 mm	100
18 0522*	0.5 - 1 mm ²	4 mm	100
18 0524*	0.5 - 1 mm ²	5 mm	100
18 0530*	1.5 - 2.5 mm ²	3 mm	100
18 0532*	1.5 - 2.5 mm ²	4 mm	100
18 0534*	1.5 - 2.5 mm ²	5 mm	100
18 0536*	1.5 - 2.5 mm ²	6 mm	100
18 0540*	4 - 6 mm ²	4 mm	100

Article no.	Cross section	Bolt ø	PU/pcs.
18 0542*	4 - 6 mm ²	5 mm	100
18 0544*	4 - 6 mm ²	6 mm	100
18 0546*	4 - 6 mm ²	8 mm	100
18 0550	10 mm ²	5 mm	100
18 0552	10 mm ²	6 mm	100
18 0560	16 mm ²	5 mm	100
18 0562	16 mm ²	6 mm	100

Tubular cable lug set

- In premium-quality raaco set box
- Contents:
 - 255 assorted pieces
 - 25 pieces each 6 mm², M6
 - 25 pieces each 6 mm², M8
 - 25 pieces each 10 mm², M6
 - 25 pieces each 10 mm², M8
 - 25 pieces each 16 mm², M8
 - 25 pieces each 25 mm², M8
 - 25 pieces each 25 mm², M10
 - 20 pieces each 35 mm², M8
 - 20 pieces each 35 mm², M10
 - 20 pieces each 50 mm², M10
 - 20 pieces each 50 mm², M12
- Crimping pliers, 6 - 50 mm², hexagonal crimping



Article no.
18 1545

Compression cable lugs set

- In premium-quality raaco set box
- Contents:
 - 370 assorted pieces
 - 50 pieces each 6 mm², M5
 - 50 pieces each 6 mm², M6
 - 50 pieces each 10 mm², M5
 - 50 pieces each 10 mm², M6
 - 25 pieces each 16 mm², M8
 - 25 pieces each 16 mm², M10
 - 25 pieces each 25 mm², M8
 - 25 pieces each 25 mm², M10
 - 20 pieces each 35 mm², M8
 - 20 pieces each 35 mm², M10
 - 15 pieces each 50 mm², M10
 - 15 pieces each 50 mm², M12
- Crimping pliers, 6 - 50 mm², hexagonal crimping



Article no.
18 1546

Hydrauliksystem GeniUS 2.0

With the GENiUS 2.0, we present the improved version of the multi-functional tool from CIMCO. The further development was achieved with many small details which make the device even better and even more durable.

The GENiUS 2.0 system consists of a small, compact basic tool in rod form and interchangeable heads, which can be replaced simply and safely with a quick release system.

The basic tool is one of the smallest **60 kN battery-powered hydraulic units** on the global market and also features the largest power range of any comparable tools. At just 2.5 kg, it is an **absolute lightweight**.

The product range of **replaceable heads** comprises a crimping head, a cutting head for cutting copper and aluminium cables and an additional hole punching head. The **intuitive locking mechanism** enables the user to exchange the replaceable heads quickly, without the need for other tools.

The unit is exclusively operated with lithium-ion rechargeable batteries of the latest construction type. Every machine is supplied with 2 x 1.5 Ah rechargeable batteries.

GENiUS 2.0 is a patented and absolutely **brilliant interchangeable head system**, which can be used for a wide variety of applications with only one tool and in professional quality.

CIMCO article no. 10 6301ff



One device, revolutionary possibilities:

Crimping

The crimping head is suitable for common half-shell lugs up to 300 mm.



Cutting

An unusual cutting head, as it is the only head of this type which can cut copper and aluminium cables up to a diameter of 50 mm.



Hole-punching

All CIMCO screw punches up to ISO 63 or square up to 92 x 92 mm can be used with the hole punching head.



Find the application video here:



Crimping cable lugs ring-shaped Cu

- Material: ETP Cu according to DIN EN 13600
- For connections with strain relief
- Insulated PA (polyamide, nylon), halogen-free



Article no.	Cross section	Bolt ø	PU/pcs.
18 0008	0.1 - 0.4 mm ²	2 mm	100
18 0010	0.1 - 0.4 mm ²	3 mm	100
18 0014	0.1 - 0.4 mm ²	4 mm	100
18 0016	0.1 - 0.4 mm ²	5 mm	100
18 0020	0.5 - 1.0 mm ²	3 mm	100
18 0024	0.5 - 1.0 mm ²	4 mm	100
18 0026	0.5 - 1.0 mm ²	5 mm	100
18 0028	0.5 - 1.0 mm ²	6 mm	100
18 0027	0.5 - 1.0 mm ²	8 mm	100
18 0029	0.5 - 1.0 mm ²	10 mm	100
18 0030	1.5 - 2.5 mm ²	3 mm	100
18 0034	1.5 - 2.5 mm ²	4 mm	100
18 0036	1.5 - 2.5 mm ²	5 mm	100
18 0038	1.5 - 2.5 mm ²	6 mm	100
18 0040	1.5 - 2.5 mm ²	8 mm	100
18 0042	1.5 - 2.5 mm ²	10 mm	100

Article no.	Cross section	Bolt ø	PU/pcs.
18 0050	4.0 - 6.0 mm ²	4 mm	100
18 0052	4.0 - 6.0 mm ²	5 mm	100
18 0054	4.0 - 6.0 mm ²	6 mm	100
18 0056	4.0 - 6.0 mm ²	8 mm	100
18 0058	4.0 - 6.0 mm ²	10 mm	100
18 0070	10.0 mm ²	5 mm	100
18 0072	10.0 mm ²	6 mm	100
18 0074	10.0 mm ²	8 mm	50
18 0076	10.0 mm ²	10 mm	50
18 0078	10.0 mm ²	12 mm	50
18 0080	16.0 mm ²	5 mm	50
18 0082	16.0 mm ²	6 mm	50
18 0084	16.0 mm ²	8 mm	50
18 0086	16.0 mm ²	10 mm	50
18 0088	16.0 mm ²	12 mm	50

Crimping cable lugs fork-shaped Cu

- Material: ETP Cu according to DIN EN 13600
- For connections with strain relief
- Insulated PA (polyamide, nylon), halogen-free



The articles marked with an *

Article no.	Cross section	Bolt ø	PU/pcs.
18 0118	0.1 - 0.4 mm ²	3 mm	100
18 0120*	0.5 - 1.0 mm ²	3 mm	100
18 0124*	0.5 - 1.0 mm ²	4 mm	100
18 0126*	0.5 - 1.0 mm ²	5 mm	100
18 0128*	0.5 - 1.0 mm ²	6 mm	100
18 0140*	1.5 - 2.5 mm ²	3 mm	100
18 0144*	1.5 - 2.5 mm ²	4 mm	100
18 0146*	1.5 - 2.5 mm ²	5 mm	100
18 0148*	1.5 - 2.5 mm ²	6 mm	100

Article no.	Cross section	Bolt ø	PU/pcs.
18 0160*	4.0 - 6.0 mm ²	4 mm	100
18 0162*	4.0 - 6.0 mm ²	5 mm	100
18 0164*	4.0 - 6.0 mm ²	6 mm	100
18 0166*	4.0 - 6.0 mm ²	8 mm	100
18 0168*	4.0 - 6.0 mm ²	10 mm	100
18 0170	10.0 mm ²	5 mm	100
18 0172	10.0 mm ²	6 mm	100
18 0174	16.0 mm ²	6 mm	100

Crimping cable lugs pin shape Cu

- Material: ETP Cu according to DIN EN 13600
- For connections with strain relief
- Insulated PA (polyamide, nylon), halogen-free



The articles marked with an *

Article no.	Cross section	Pin length	PU/pcs.
18 0220	0.1 - 0.4 mm ²	9 mm	100
18 0222*	0.5 - 1.0 mm ²	10 mm	100
18 0224*	1.5 - 2.5 mm ²	10 mm	100

Article no.	Cross section	Pin length	PU/pcs.
18 0226*	4.0 - 6.0 mm ²	11 mm	100
18 0227*	10.0 mm ²	11 mm	100
18 0228*	16.0 mm ²	15 mm	100

Blade receptacles DIN 46245, part 1-3

- Material: CuZn (brass)
- Insulated PA (polyamide, nylon), halogen-free



The articles marked with an *

Article no.	Cross section	Connector size	PU/pcs.
18 0250*	0.5 - 1.0 mm ²	2.8x0.5 mm	100
18 0252*	0.5 - 1.0 mm ²	2.8x0.8 mm	100
18 0254*	0.5 - 1.0 mm ²	4.8x0.5 mm	100
18 0256*	0.5 - 1.0 mm ²	4.8x0.8 mm	100
18 0230*	0.5 - 1.0 mm ²	6.3x0.8 mm	100
18 0236*	1.5 - 2.5 mm ²	2.8x0.5 mm	100

Article no.	Cross section	Connector size	PU/pcs.
18 0238*	1.5 - 2.5 mm ²	2.8x0.8 mm	100
18 0258*	1.5 - 2.5 mm ²	4.8x0.5 mm	100
18 0260*	1.5 - 2.5 mm ²	4.8x0.8 mm	100
18 0232*	1.5 - 2.5 mm ²	6.3x0.8 mm	100
18 0234*	4.0 - 6.0 mm ²	6.3x0.8 mm	100
18 0235	4.0 - 6.0 mm ²	9.5x1.2 mm	100

Blade receptacles fully insulated

- Material: CuZn (brass)
- Insulated PA (polyamide, nylon), halogen-free



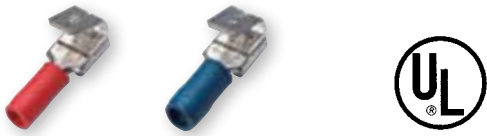
The articles marked with an *

Article no.	Cross section	Connector size	PU/pcs.
18 0241*	0.5 - 1.0 mm ²	2.8x0.5 mm	100
18 0243	0.5 - 1.0 mm ²	2.8x0.8 mm	100
18 0244*	0.5 - 1.0 mm ²	4.8x0.5 mm	100
18 0245*	0.5 - 1.0 mm ²	4.8x0.8 mm	100
18 0240	0.5 - 1.0 mm ²	6.3x0.8 mm	100
18 0246*	1.5 - 2.5 mm ²	2.8x0.5 mm	100
18 0247*	1.5 - 2.5 mm ²	2.8x0.8 mm	100

Article no.	Cross section	Connector size	PU/pcs.
18 0248*	1.5 - 2.5 mm ²	4.8x0.5 mm	100
18 0249*	1.5 - 2.5 mm ²	4.8x0.8 mm	100
18 0242	1.5 - 2.5 mm ²	6.3x0.8 mm	100
18 0270	4.0 - 6.0 mm ²	4.8x0.5 mm	100
18 0272	4.0 - 6.0 mm ²	4.8x0.8 mm	100
18 0274*	4.0 - 6.0 mm ²	6.3x0.8 mm	100

Blade receptacles with branch

- Material: CuZn (brass)
- Insulated PA (polyamide, nylon), halogen-free



Article no.	Cross section	Connector size	PU/pcs.
18 0280	0.5 - 1.0 mm ²	6.3×0.8 mm	100
18 0282	1.5 - 2.5 mm ²	6.3×0.8 mm	100
18 0284	4.0 - 6.0 mm ²	6.3×0.8 mm	100

Blade terminal

- Material: CuZn (brass)
- Insulated PA (polyamide, nylon), halogen-free



Article no.	Cross section	Connector size	PU/pcs.
18 0286	0.5 - 1.0 mm ²	2.8×0.8 mm	100
18 0288	0.5 - 1.0 mm ²	4.8×0.8 mm	100
18 0290	0.5 - 1.0 mm ²	6.3×0.8 mm	100
18 0291	1.5 - 2.5 mm ²	4.3×0.8 mm	100
18 0292	1.5 - 2.5 mm ²	6.3×0.8 mm	100
18 0294	4.0 - 6.0 mm ²	6.3×0.8 mm	100

Circular sockets

- Material: CuZn (brass)
- Insulated PA (polyamide, nylon), halogen-free



The articles marked with an *

Article no.	Cross section	Connector size	PU/pcs.
18 0310*	0.5 - 1.0 mm ²	4 mm	100
18 0312*	1.5 - 2.5 mm ²	5 mm	100
18 0314	4.0 - 6.0 mm ²	5 mm	100

Pin terminal

- Material: CuZn (brass)
- Insulated PA (polyamide, nylon), halogen-free



Article no.	Cross section	Connector size	PU/pcs.
18 0300	0.5 - 1.0 mm ²	4 mm	100
18 0302	1.5 - 2.5 mm ²	5 mm	100
18 0304	4.0 - 6.0 mm ²	5 mm	100

Parallel connectors

- Material: ETP Cu according to DIN EN 13600
- For connections with strain relief and Cu inner sleeve
- Insulation PVC/PE



The articles marked with an *

Article no.	Cross section	Material	PU/pcs.
18 0318	0.1 - 0.4 mm ²	PE	100
18 0320*	0.5 - 1.0 mm ²	PVC	100
18 0322*	1.5 - 2.5 mm ²	PVC	100
18 0324	4.0 - 6.0 mm ²	PVC	100

Butt connectors

- Material: ETP Cu according to DIN EN 13600
- For connections with strain relief
- Insulated PA (polyamide, nylon), halogen-free



Article no.	Cross section	Colour	PU/pcs.
18 0328	0.1 - 0.4 mm ²	yellow	100
18 0330	0.5 - 1.0 mm ²	red	100
18 0332	1.5 - 2.5 mm ²	blue	100
18 0334	4.0 - 6.0 mm ²	yellow	100

Butt connectors for flexible conductors, with shrink insulation

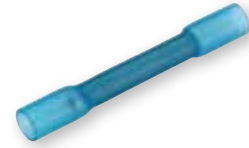
- Material: ETP Cu according to DIN EN 13600
- For connections with strain relief
- Polyolefin insulation with inner layer of hot-melt adhesive



Article no.	Cross section	Colour	PU/pcs.
18 0340	0.5 - 1.0 mm ²	red	100
18 0342	1.5 - 2.5 mm ²	blue	100
18 0346	4.0 - 6.0 mm ²	yellow	50

Butt connectors for solid conductors, with shrink insulation

- Extended design make double crimping possible
- Inner coating with hot-melt adhesive



Article no.	Cross section	Colour	PU/pcs.
18 0352	1.5 - 2.5 mm ²	blue	100

EXPERT TIP

Butt connectors in extended version

So far no technical option of repairing or extending a damaged solid conductor with insulated connectors.

Thanks to the extended design of the copper sleeve, the conductors can now be double crimped with the new butt



connector. This is particularly suitable for all cases of repair to damaged solid conductors. In addition to that it provides the only tested solution of connecting a solid conductor with an insulated connector.

Insulated cable lug set

- In premium-quality raaco set box
- Contents:
 - 135 assorted pieces
 - 15 pieces each ring cable lugs DIN 46237 0.5 - 1 mm², M4
 - 15 pieces each ring cable lugs DIN 46237 1.5 - 2.5 mm², M4
 - 15 pieces each ring cable lugs DIN 46237 1.5 - 2.5 mm², M5
 - 15 pieces each ring cable lugs DIN 46237 4 - 6 mm², M5
 - 15 pieces each blade receptacles DIN 46245 1.5 - 2.5 mm², 6.3 × 0.8 mm
 - 15 pieces each blade receptacle DIN 46245 4 - 6 mm², 6.3 × 0.8 mm
 - 15 pieces each blade receptacles with branch 1.5 - 2.5 mm², 6.3 × 0.8 mm
 - 15 pieces each blade terminals insulated 1.5 - 2.5 mm², 6.3 × 0.8 mm
 - 15 pieces each butt connectors insulated 1.5 - 2.5 mm²
 - Crimping tool, 0.5 - 6 mm², oval crimp



Article no.
18 1530

Insulated cable lug set

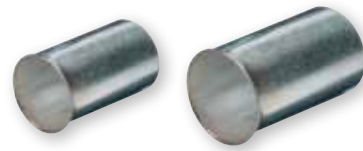
- In premium-quality raaco set box
- Contents:
 - 500 assorted pieces
 - 50 pieces each ring cable lugs DIN 46237 0.5 - 1 mm², M4
 - 50 pieces each ring cable lugs DIN 46237 0.5 - 1 mm², M5
 - 50 pieces each ring cable lugs DIN 46237 1.5 - 2.5 mm², M5
 - 25 pieces each ring cable lugs DIN 46237 4 - 6 mm², M5
 - 25 pieces each ring cable lugs DIN 46237 0.5 - 1 mm², M4
 - 25 pieces each fork-shaped cable lugs DIN 46237 1.5 - 2.5 mm², M5
 - 25 pieces each pin cable lugs DIN 46231 0.5 - 1 mm², 9 mm
 - 25 pieces each pin cable lugs DIN 46231 1.5 - 2.5 mm², 10 mm
 - 25 pieces each blade receptacles DIN 46245 0.5 - 1 mm², 6.3 × 0.8 mm
 - 25 pieces each blade receptacles DIN 46245 1.5 - 2.5 mm², 6.3 × 0.8 mm
 - 20 pieces each blade receptacles with branch 0.5 - 1 mm², 6.3 × 0.8 mm
 - 20 pieces each blade receptacles with branch 1.5 - 2.5 mm², 6.3 × 0.8 mm
 - 20 pieces each blade terminals insulated 0.5 - 1 mm², 6.3 × 0.8 mm
 - 20 pieces each blade terminals insulated 1.5 - 2.5 mm², 6.3 × 0.8 mm
 - 10 pieces each pin terminals insulated 0.5 - 1 mm², 4 mm
 - 10 pieces each round terminals insulated 1.5 - 2.5 mm², 5 mm
 - 10 pieces each circular sockets 0.5 - 1 mm², 4 mm
 - 10 pieces each circular sockets 1.5 - 2.5 mm², 5 mm
 - 25 pieces each butt connectors 0.5 - 1 mm²
 - 20 pieces each butt connectors 1.5 - 2.5 mm²
 - 10 pieces each butt connectors 4 - 6 mm²
 - Crimping tool, 0.5 - 6 mm², oval crimp



Article no.
18 1540

Non insulated wire end ferrules DIN 46228 , part 1 and special dimensions

• Material: ETP Cu according to DIN EN 13600



Article no.	Cross section	Length	PU/pcs.
18 2040	0.25 mm ²	5 mm	1000
18 2042	0.25 mm ²	7 mm	1000
18 2046	0.34 mm ²	5 mm	1000
18 2048	0.34 mm ²	7 mm	1000
18 2050	0.5 mm ²	6 mm	1000
18 2051	0.5 mm ²	8 mm	1000
18 2049	0.5 mm ²	10 mm	1000
18 2052	0.75 mm ²	6 mm	1000
18 2054	0.75 mm ²	10 mm	1000
18 2055	0.75 mm ²	15 mm	1000
18 2056	1 mm ²	6 mm	1000
18 2057	1 mm ²	8 mm	1000
18 2058	1 mm ²	10 mm	1000
18 2059	1 mm ²	12 mm	1000
18 2060	1.5 mm ²	7 mm	1000
18 2062	1.5 mm ²	10 mm	1000
18 2064	1.5 mm ²	12 mm	1000
18 2066	1.5 mm ²	15 mm	1000
18 2067	1.5 mm ²	18 mm	1000
18 2070	2.5 mm ²	7 mm	1000
18 2071	2.5 mm ²	10 mm	1000
18 2072	2.5 mm ²	12 mm	1000
18 2074	2.5 mm ²	15 mm	1000
18 2075	2.5 mm ²	20 mm	1000
18 2078	4 mm ²	9 mm	1000
18 2080	4 mm ²	12 mm	1000
18 2082	4 mm ²	15 mm	250
18 2083	4 mm ²	20 mm	250
18 2085	6 mm ²	10 mm	250
18 2086	6 mm ²	12 mm	250
18 2088	6 mm ²	15 mm	100
18 2089	6 mm ²	20 mm	250
18 2092	10 mm ²	12 mm	100
18 2094	10 mm ²	15 mm	250

Article no.	Cross section	Length	PU/pcs.
18 2096	10 mm ²	18 mm	100
18 2097	10 mm ²	25 mm	250
18 2100	16 mm ²	12 mm	250
18 2102	16 mm ²	15 mm	250
18 2104	16 mm ²	18 mm	100
18 2103	16 mm ²	25 mm	250
18 2105	16 mm ²	32 mm	250
18 2106	25 mm ²	12 mm	100
18 2108	25 mm ²	15 mm	100
18 2110	25 mm ²	18 mm	100
18 2112	25 mm ²	25 mm	100
18 2111	25 mm ²	32 mm	100
18 2113	35 mm ²	15 mm	100
18 2114	35 mm ²	18 mm	100
18 2115	35 mm ²	25 mm	100
18 2119	35 mm ²	32 mm	100
18 2120	50 mm ²	18 mm	100
18 2116	50 mm ²	22 mm	100
18 2121	50 mm ²	32 mm	100
18 2123	70 mm ²	22 mm	100
18 2118	70 mm ²	26 mm	100
18 2124	70 mm ²	30 mm	100
18 2125	70 mm ²	32 mm	100
18 2127	95 mm ²	25 mm	100
18 2122	95 mm ²	30 mm	25
18 2128	95 mm ²	32 mm	25
18 2129	120 mm ²	32 mm	25
18 2126	120 mm ²	34 mm	25
18 2131	120 mm ²	40 mm	25
18 2132	150 mm ²	32 mm	25
18 2133	150 mm ²	40 mm	25
18 2134	185 mm ²	32 mm	25
18 2135	185 mm ²	40 mm	25

EXPERT TIP

Not to be underestimated: Wire end ferrules

Wire end ferrules protect the stripped ends of fine-wire or flexible wires so that they can be connected in terminals without damaging the individual wires. Fine-wire wires must be provided with wire end ferrules if the connection terminal is not approved for the connection of non-terminated wires.



When installing wire without a wire end ferrule in a terminal which is not suitable for it, individual wires often do not make contact in the terminal, and this can lead to increased resistance and even to combustion. The wire end ferrules should be selected exactly according to the conductor cross section and processed using tools intended for the purpose.

Insulated wire end ferrules tape

- Polypropylene insulation
- Length 14 mm



Colour row according to DIN 46228, part 4

Article no.	Cross section	Colour	PU/pcs.
18 4500	0.5 mm ²	white	500
18 4502	0.75 mm ²	grey	500
18 4504	1 mm ²	red	500
18 4506	1.5 mm ²	black	500
18 4508	2.5 mm ²	blue	400

Colour row 1

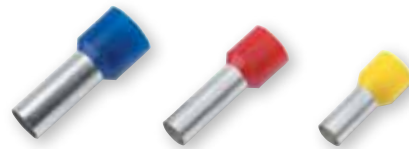
Article no.	Cross section	Colour	PU/pcs.
18 4460	0.5 mm ²	white	500
18 4462	0.75 mm ²	blue	500
18 4464	1 mm ²	red	500
18 4466	1.5 mm ²	black	500
18 4468	2.5 mm ²	grey	400

Colour row 2

Article no.	Cross section	Colour	PU/pcs.
18 4480	0.50 mm ²	orange	500
18 4482	0.75 mm ²	white	500
18 4484	1 mm ²	yellow	500
18 4486	1.5 mm ²	red	500
18 4488	2.5 mm ²	blue	400

Insulated wire end ferrules DIN 46228, part 4 and special dimensions

- Polypropylene insulation
- For effortless attachment to finely stranded copper conductors
- Prevents damage and fanning out
- Colours and dimensions according to DIN



Article no.	Cross section	Length w/o insulation	PU/pcs.
18 2310	0.5 mm ²	6 mm	100
18 2312	0.5 mm ²	8 mm	100
18 2314	0.5 mm ²	10 mm	100
18 2316	0.75 mm ²	6 mm	100
18 2318	0.75 mm ²	8 mm	100
18 2320	0.75 mm ²	10 mm	100
18 2322	0.75 mm ²	12 mm	100
18 2324	1 mm ²	6 mm	100
18 2326	1 mm ²	8 mm	100
18 2328	1 mm ²	10 mm	100
18 2330	1 mm ²	12 mm	100
18 2332	1.5 mm ²	8 mm	100
18 2334	1.5 mm ²	10 mm	100
18 2335	1.5 mm ²	12 mm	100
18 2336	1.5 mm ²	18 mm	100
18 2338	2.5 mm ²	8 mm	100
18 2340	2.5 mm ²	12 mm	100
18 2342	2.5 mm ²	18 mm	100
18 2344	4 mm ²	10 mm	100

Article no.	Cross section	Length w/o insulation	PU/pcs.
18 2346	4 mm ²	12 mm	100
18 2348	4 mm ²	18 mm	100
18 2350	6 mm ²	12 mm	100
18 2352	6 mm ²	18 mm	100
18 2354	10 mm ²	12 mm	100
18 2356	10 mm ²	18 mm	100
18 2358	16 mm ²	12 mm	100
18 2360	16 mm ²	18 mm	100
18 2362	25 mm ²	16 mm	50
18 2364	25 mm ²	22 mm	50
18 2366	35 mm ²	16 mm	50
18 2368	35 mm ²	25 mm	50
18 2370	50 mm ²	20 mm	50
18 2372	50 mm ²	25 mm	50
18 2374	70 mm ²	21 mm	25
18 2376	95 mm ²	25 mm	25
18 2378	120 mm ²	27 mm	25
18 2380	150 mm ²	32 mm	25

Insulated wire end ferrules

- Polypropylene insulation
- For effortless attachment to finely stranded copper conductors
- Prevents damage and fanning out



Dimensions according to DIN 46228, part 4, colour row 1

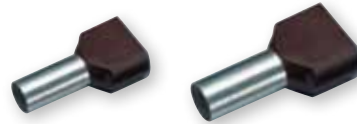
Article no.	Cross section	Length w/o insulation	Colour	PU/ pcs.
18 0988	0.25 mm ²	6 mm	violet	100
18 0990	0.25 mm ²	8 mm	violet	100
18 0992	0.34 mm ²	6 mm	pink	100
18 0994	0.34 mm ²	8 mm	pink	100
18 0996	0.5 mm ²	6 mm	white	100
18 0998	0.5 mm ²	8 mm	white	100
18 4998	0.5 mm ²	8 mm	white	500
18 0999	0.5 mm ²	10 mm	white	100
18 0940	0.75 mm ²	6 mm	blue	100
18 1000	0.75 mm ²	8 mm	blue	100
18 5000	0.75 mm ²	8 mm	blue	500
18 1001	0.75 mm ²	10 mm	blue	100
18 0942	0.75 mm ²	12 mm	blue	100
18 0944	1 mm ²	6 mm	red	100
18 1002	1 mm ²	8 mm	red	100
18 5002	1 mm ²	8 mm	red	500
18 1003	1 mm ²	10 mm	red	100
18 0946	1 mm ²	12 mm	red	100
18 1004	1.5 mm ²	8 mm	black	100
18 5004	1.5 mm ²	8 mm	black	500
18 0948	1.5 mm ²	10 mm	black	100
18 0949	1.5 mm ²	12 mm	black	100
18 1005	1.5 mm ²	18 mm	black	100
18 5005	1.5 mm ²	18 mm	black	500
18 1006	2.5 mm ²	8 mm	grey	100
18 5006	2.5 mm ²	8 mm	grey	500
18 0950	2.5 mm ²	12 mm	grey	100
18 1007	2.5 mm ²	18 mm	grey	100
18 5007	2.5 mm ²	18 mm	grey	500
18 1008	4 mm ²	10 mm	orange	100
18 5008	4 mm ²	10 mm	orange	500
18 0952	4 mm ²	12 mm	orange	100
18 1009	4 mm ²	18 mm	orange	100
18 5009	4 mm ²	18 mm	orange	500
18 1010	6 mm ²	12 mm	green	100
18 5010	6 mm ²	12 mm	green	500
18 1012	6 mm ²	18 mm	green	100
18 5012	6 mm ²	18 mm	green	500
18 1014	10 mm ²	12 mm	brown	100
18 5014	10 mm ²	12 mm	brown	500
18 1016	10 mm ²	18 mm	brown	100
18 5016	10 mm ²	18 mm	brown	500
18 1018	16 mm ²	12 mm	ivory	100
18 5018	16 mm ²	12 mm	ivory	500
18 1020	16 mm ²	18 mm	ivory	100
18 5020	16 mm ²	18 mm	ivory	500
18 1022	25 mm ²	16 mm	black	50
18 1023	25 mm ²	22 mm	black	50
18 1024	35 mm ²	16 mm	red	50
18 1025	35 mm ²	25 mm	red	50
18 1026	50 mm ²	20 mm	blue	50
18 1027	50 mm ²	25 mm	blue	50

Dimensions according to DIN 46228, part 4, colour row 2

Article no.	Cross section	Length w/o insulation	Colour	PU/ pcs.
18 2188	0.25 mm ²	6 mm	light blue	100
18 2190	0.25 mm ²	8 mm	light blue	100
18 2192	0.34 mm ²	6 mm	turquoise	100
18 2194	0.34 mm ²	8 mm	turquoise	100
18 2196	0.5 mm ²	6 mm	orange	100
18 2198	0.5 mm ²	8 mm	orange	100
18 2199	0.5 mm ²	10 mm	orange	100
18 2140	0.75 mm ²	6 mm	white	100
18 2200	0.75 mm ²	8 mm	white	100
18 2201	0.75 mm ²	10 mm	white	100
18 2242	0.75 mm ²	12 mm	white	100
18 2244	1 mm ²	6 mm	yellow	100
18 2202	1 mm ²	8 mm	yellow	100
18 2203	1 mm ²	10 mm	yellow	100
18 2246	1 mm ²	12 mm	yellow	100
18 2204	1.5 mm ²	8 mm	red	100
18 2248	1.5 mm ²	10 mm	red	100
18 2249	1.5 mm ²	12 mm	red	100
18 2205	1.5 mm ²	18 mm	red	100
18 2206	2.5 mm ²	8 mm	blue	100
18 2250	2.5 mm ²	12 mm	blue	100
18 2207	2.5 mm ²	18 mm	blue	100
18 2208	4 mm ²	10 mm	grey	100
18 2252	4 mm ²	12 mm	grey	100
18 2209	4 mm ²	18 mm	grey	100
18 2210	6 mm ²	12 mm	black	100
18 2212	6 mm ²	18 mm	black	100
18 2214	10 mm ²	12 mm	ivory	100
18 2216	10 mm ²	18 mm	ivory	100
18 2218	16 mm ²	12 mm	green	100
18 2220	16 mm ²	18 mm	green	100
18 2222	25 mm ²	16 mm	brown	50
18 2223	25 mm ²	22 mm	brown	50
18 2224	35 mm ²	16 mm	beige	50
18 2225	35 mm ²	25 mm	beige	50
18 2226	50 mm ²	20 mm	olive	50
18 2227	50 mm ²	25 mm	olive	50

Insulated twin wire end ferrules

- Polypropylene insulation
- For effortless attachment to finely stranded copper conductors
- Prevents damage and fanning out



Colour row according to DIN 46228, part 4

Article no.	Cross section	Length w/o insulation	Colour	PU/ pcs.
18 2460	2.0 × 0.50 mm ²	8 mm	white	100
18 2462	2.0 × 0.75 mm ²	8 mm	grey	100
18 2464	2.0 × 0.75 mm ²	10 mm	grey	100
18 2466	2.0 × 1.00 mm ²	8 mm	red	100
18 2468	2.0 × 1.00 mm ²	10 mm	red	100
18 2470	2.0 × 1.50 mm ²	8 mm	black	100
18 2472	2.0 × 1.50 mm ²	12 mm	black	100
18 2474	2.0 × 2.50 mm ²	10 mm	blue	100
18 2476	2.0 × 2.50 mm ²	13 mm	blue	100
18 2478	2.0 × 4.00 mm ²	12 mm	grey	100
18 2480	2.0 × 6.00 mm ²	14 mm	yellow	100
18 2482	2.0 × 10.00 mm ²	14 mm	red	100
18 2484	2.0 × 16.00 mm ²	14 mm	blue	100

Colour row 2

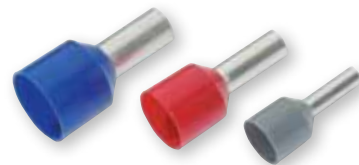
Article no.	Cross section	Length w/o insulation	Colour	PU/ pcs.
18 2430	2.0 × 0.50 mm ²	8 mm	orange	100
18 2432	2.0 × 0.75 mm ²	8 mm	white	100
18 2434	2.0 × 0.75 mm ²	10 mm	white	100
18 2436	2.0 × 1.00 mm ²	8 mm	yellow	100
18 2438	2.0 × 1.00 mm ²	10 mm	yellow	100
18 2440	2.0 × 1.50 mm ²	8 mm	red	100
18 2442	2.0 × 1.50 mm ²	12 mm	red	100
18 2444	2.0 × 2.50 mm ²	10 mm	blue	100
18 2446	2.0 × 2.50 mm ²	13 mm	blue	100
18 2448	2.0 × 4.00 mm ²	12 mm	grey	100
18 2450	2.0 × 6.00 mm ²	14 mm	black	100
18 2452	2.0 × 10.00 mm ²	14 mm	ivory	100
18 2454	2.0 × 16.00 mm ²	14 mm	green	100

Colour row 1

Article no.	Cross section	Length w/o insulation	Colour	PU/ pcs.
18 2400	2.0 × 0.50 mm ²	8 mm	white	100
18 2402	2.0 × 0.75 mm ²	8 mm	blue	100
18 2404	2.0 × 0.75 mm ²	10 mm	blue	100
18 2406	2.0 × 1.00 mm ²	8 mm	red	100
18 2408	2.0 × 1.00 mm ²	10 mm	red	100
18 2410	2.0 × 1.50 mm ²	8 mm	black	100
18 2412	2.0 × 1.50 mm ²	12 mm	black	100
18 2414	2.0 × 2.50 mm ²	10 mm	grey	100
18 2416	2.0 × 2.50 mm ²	13 mm	grey	100
18 2418	2.0 × 4.00 mm ²	12 mm	orange	100
18 2420	2.0 × 6.00 mm ²	14 mm	green	100
18 2422	2.0 × 10.00 mm ²	14 mm	brown	100
18 2424	2.0 × 16.00 mm ²	14 mm	ivory	100

Insulated wire end ferrules for short-circuit-proof and short-to-ground-proof cables

- Colour row according to DIN 46228, part 4
- Material: ETP Cu according to DIN EN 13600
- Polypropylene insulation



Article no.	Cross section	Length w/o insulation	PU/ pcs.
18 2500	1.5 mm ²	17.5 mm	100
18 2502	1.5 mm ²	18.5 mm	100
18 2504	2.5 mm ²	17.5 mm	100
18 2506	2.5 mm ²	21.5 mm	100

Article no.	Cross section	Length w/o insulation	PU/ pcs.
18 2508	4 mm ²	19.5 mm	100
18 2510	6 mm ²	23 mm	100
18 2512	10 mm ²	24 mm	100
18 2514	16 mm ²	25.5 mm	100

Non insulated wire end ferrules set

- In a practical dispenser
- Contents:
 - 2500 assorted pieces
 - 500 pieces 0.50 mm², 6 mm long
 - 500 pieces 0.75 mm², 6 mm long
 - 500 pieces 1.00 mm², 6 mm long
 - 500 pieces 1.50 mm², 7 mm long
 - 500 pieces 2.50 mm², 7 mm long



Article no.
18 1520

Non insulated wire end ferrules set

- In premium-quality raaco set box
- Contents:
 - 3500 assorted pieces
 - 1000 pieces 0.75 mm², 6 mm long
 - 1000 pieces 1.00 mm², 6 mm long
 - 750 pieces 1.50 mm², 7 mm long
 - 750 pieces 2.50 mm², 7 mm long
 - Crimping pliers, 0.5 - 2.5 mm², indent crimp



Article no.
18 1510

Non insulated wire end ferrules set

- In premium-quality raaco set box
- Contents:
 - 4350 assorted pieces
 - 1000 pieces 1.00 mm², 6 mm long
 - 1000 pieces 1.50 mm², 7 mm long
 - 1000 pieces 2.50 mm², 7 mm long
 - 500 pieces 4.00 mm², 9 mm long
 - 500 pieces 6.00 mm², 12 mm long
 - 250 pieces 10.00 mm², 18 mm long
 - 100 pieces 16.00 mm², 18 mm long
 - Universal crimping pliers, 0.5 - 16 mm², indent crimp



Article no.
18 1512

Insulated wire end ferrule sets

- In a practical dispenser
- Content:
 - 400 assorted pieces
 - 50 pieces 0.50 mm², 8 mm long
 - 100 pieces 0.75 mm², 8 mm long
 - 100 pieces 1.00 mm², 8 mm long
 - 100 pieces 1.50 mm², 8 mm long
 - 50 pieces 2.50 mm², 8 mm long



Article no.	Colour row	PU/pcs.
18 1502	1	1
18 1503	2	1
18 1504	DIN	1

- In a practical dispenser
- Contents:
 - 100 assorted pieces
 - 50 pieces 4.00 mm², 10 mm long
 - 20 pieces 6.00 mm², 12 mm long
 - 20 pieces 10.00 mm², 12 mm long
 - 10 pieces 16.00 mm², 12 mm long



Article no.	Colour row	PU/pcs.
18 1505	1	1
18 1506	2	1
18 1507	DIN	1

PRICE REDUCTION
on the dispensers!

Tool TRENDS

Electrics



Suitable tool

Crimp like the big ones!

These two small power packages offer everything that excellent crimp pliers should offer:

- Long service life
- Optimised crimping profiles for the best crimping results
- Versatile applications
- Perfect handling thanks to optimal ergonomics

With the **click 'n' crimp** we have developed manual crimping pliers with two particularly beneficial functions:

1. The crimping inserts for various types and sizes of solderless cable connectors are **interchangeable**. By simply clicking it into place, this only takes seconds, without requiring any additional tools.
2. The pliers handles are designed as **storage containers** where two additional pairs of crimping profiles can be **safely stored**.

The crimping pliers are supplied completely equipped with three hardened precise crimping profile inserts and **only weigh 690 g** in total.

The new **FLEXI-CRIMP PRO** is impressive with its beneficial **front crimping**, i.e. the connectors and cables are inserted from the front. Especially suitable for work in places that are **difficult to access** and **tight spaces**. The crimping pliers are equipped with a **counter-sunk ridged or ribbed area which self-adjusts to the conductor cross section**. The new type of precision steel spring element ensure **even crimping quality**, even at extremely high or low temperatures. The crimping areas are set using the selector switch from 0.5 to 6 mm² and 6 to 16 mm².



click 'n' crimp



click 'n' crimp ELECTRICAL ENGINEERING
CIMCO article no. 10 6000

flexi crimp PRO



Front crimping pliers FLEXI-CRIMP PRO
CIMCO article no. 10 1945

Find the application video here:



www.cimco.de

cimco®

W E R K Z E U G F A B R I K